

"The Messenger"

VOLUME 38; ISSUE 3; March 1, 2025

FROM BECKY WILBURN,

If you happen to be walking the hallways at Groce Church and you see a little old woman wearing a cute hat with a butterfly on it, that would be me—Becky Wilburn—your new Music Director! Please stop to say "Hello!" and to introduce yourself!

Born in Virginia and routed to North Carolina by way of West Virginia, New Jersey, Missouri, Florida and Georgia, my husband and I and our two children moved here to Asheville in 1987. John was Chief of Maintenance and Engineering for the Blue Ridge Parkway. John now resides in Glory, our daughter lives in Colorado and our son lives here in Asheville.

I began taking piano lessons when I was six years old. My first teacher told my mother that "Rebecca will never learn to play the piano!" So, my Mama, determined that I *would* learn to play the piano, found a new teacher for me. I am ever so glad that she did, because music became a huge part of my life! In about the seventh grade, my Daddy bought a Hammond Spinnet Organ for me and thus began my love for the organ.

My organ teacher recommended me for my first job as Organist at Ghent Brethren Church in Roanoke, VA. I was only fifteen years old and the Choir Director was in her late seventies. Boy, did I ever learn a lot from her! As John and I moved to wherever the National Park sent him, I played for churches wherever we landed and continued to learn.

My second love was working with young children. I taught three and four year olds in Preschool, directed children's choirs and began leading Summer and Christmas music camps. By the way ... Groce will be hosting a Summer Music Camp in July, so save the date of July 14-18! We will need lots of helpers, so please jot your name and phone number on a slip of paper to give to me.

Well, Veronica asked me to write a little something just to introduce myself to you and I suppose I have done that! The only other thing is that we have plenty of empty chairs in the choir and we sure would like for you to join us. I hope to see YOU soon at 6pm on Wednesday night! Oh, and if you have a favorite hymn you would like to sing or hear, please let me know.



Helene Disaster Response

Helene Disaster Response at Groce and the WNC Conference of the UMC

When Groce transitioned from its meal serving and supplies distribution at the end of October, I communicated that we would define how Groce would continue to play a role in the long term recovery effort. Defining a distinct path and role for Groce was more challenging than I realized. However, there have still been lots of ways that Groce has been helping. Here are examples and ways you can be involved. I am sure I have left out things the Body of Christ at Groce is doing so let me know what I missed so we can share it.

- **Supplies leftover from our resource center and new supplies that arrived** were taken to other resource centers or directly to those in need including another visit to the Big Ivy Community Center.
- **The tractor trailer load of pallets of supplies brought from Wisconsin** by the cousin of one of the managers of the Verizon cell/WiFi/charging trailer Groce hosted that were stored in a Mills River warehouse have all been dispersed to those in need. The items included water, medical supplies, clothes and livestock feed.
- **Our Chances for Children / Grateful Village new friends (Tracey Stebbing, Anna Harrelson, Marsha van Rijssen)** from October continue to use one of the lower level Epworth building rooms to sort and distribute clothes. <https://chancesforchildren Carolinas.com/> and <https://gratefulvillage.com/>
- Groce received and distributed **construction site temporary power poles** from Tarboro, NC.
- **Groce's Agape Sunday School class sent a monetary gift to the late Vicki Matthew's daughter, Jamie**, who lost her trailer home and all the contents in the flooding, resulting in her having to move away from Asheville. Contact Tina Stovall, 828-298-7287, if you would like to learn more about Jamie's situation and how you might help.
- **Here is probably a small sampling** of where members or friends of Groce have been making a difference. Feel free to contact any of them about their experiences, needs and recommendations.
 - ⇒ **Marsha van Rijssen** (the Prom Dress Exchange and October meal production leader), **828-545-3133, is in real need of some folks to drop in periodically at the clothes distribution at Covenant Community UMC** near Reynolds High School.
 - ⇒ **Jackie Davis, 828-776-6548, has been doing meal deliveries** for Mercy Chefs (including many of the meals at the Vets Restoration Quarters where the UMM serve one Wednesday a month) and is familiar with the needs at the Buncombe County Community High School. <https://mercychefs.com/helene-response/> and <https://chs.buncombeschools.org/>
 - ⇒ **Angela Woehl, 828-505-9673, has been helping with meals at Blunt Pretzel** in Swannanoa and doing other volunteer work. She highly recommends looking at the Swannanoa Grassroots Alliance for a variety of volunteer opportunities. <https://www.swannanoagrassrootsalliance.org/volunteer>
 - ⇒ **Gerald Davis, 828-989-9487, and other members, have been part of the Skyland UMC led Bridge to Literacy reading program with W.D. Williams Elementary School** given the impact of Helene on Swannanoa children.
 - ⇒ **Jodie Hamrick, 828-230-2663, has been helping the Generation Church in Swannanoa sort and organize donated items** and previously doing the same at Trinity Church of Fairview.
- **A.C. Reynolds High School PTSA Circle of Support.** President, Marsha van Rijssen, 828-545-3133. The PTSA is in need of various volunteers, but especially the Family Coordinator role. You can learn more about the role here (<https://acrhs.buncombeschools.org/o/acrhs/article/1856504>), watch this video (<https://www.youtube.com/watch?v=ScQNVsjuyqQ>), or call Marsha. <https://acrhs.buncombeschools.org/o/acrhs/article/1856504>
- **Chances for Children requested help screening and doing follow up on assistance applications.** I did the first one for a family in South Mills River to see how it works so we can potentially involve other Groce members.
- **Family 2 Family** continues to stay engaged through Bell Elementary, Reynolds Middle and High Schools providing their typical support to students but also identifying Helene related needs. Contact **Jane Morse, 828-273-3190**, with any questions about Bell and **Tina Stovall, 828-298-7287**, with any questions about the middle or high school.
- Jill and I are attending **ABCCM's next meeting of the faith arm of the WNC Long Term Recovery Group on February 25th** to hear about the latest developments.
- We continue to stay in contact with the **WNC Conference Director of Disaster Recovery, Maggie Armstrong.**
- **With regards to hands-on, manual type labor through the UMC disaster recovery teams, the first step for a volunteer is to attend the UMCOR's Early Response Team training.** Previous training sites

were well east of Asheville and I was not able to attend. They have now scheduled two sessions in WNC, March 1 at Boone UMC, and **March 8 at Skyland UMC**. They are all day sessions. I plan on attending the March 8 training and welcome anyone else to join me. You can register at this link: <https://www.wnccumc.org/newsdetail/new-early-response-team-ert-classes-added-18919039>

Please contact me with ways you have been helping and any feedback, ideas and questions as we continue to serve our community in this multi-year recovery effort. truemorse@gmail.com, 743-999-1769

~Submitted by True Morse

Valentine's Day Dinner

VALENTINE'S DAY SUCCESS

Such a fun evening of laughter, good food, and making new friends while raising \$1,000 to be used to reduce the principal of the church loan. We had the best help by the youth (thank you Jill for recruiting), UMM, Women of Faith, and community members. I heard many comments about how delicious the food was. Entertainment was extraordinary and may I mention the clean up crew? How about those decorations? And many people dressed for the occasion and the room was colorful. **THANK YOU!**

~ Submitted by Pam Budd

Church Loan Reduction

Church Loan Principal Reduced by \$2,500!

At the February 6th meeting of the United Methodist Men it was approved to make a contribution of \$1,500 to reduce the principal of the church loan. In addition, we had so many people enjoy a wonderful time at the Valentine's Day dinner that included musical performances and karaoke singing that raised \$1,000. So a total of \$2,500 will go towards reducing the church loan principal balance from \$59,410 to \$56,910.

~ Submitted by Pam Budd & Fred Bailey

Crafty Critters & Nifty Knitters

This new group is headed up by Nurture Chairperson, Pam Rogalski, and she invites anyone who loves to knit, crochet, sew, color, etc. to participate. Join her every Tuesday morning at 10:30am in Asbury Lobby for a time of creativity and peaceful fellowship. For more information, please contact Pam at 828.215.2685

~ Submitted by Pam Rogalski

Blessing Box Thank You

The Blessing Box is a very important offering to the community! Supplying about 30 pounds of food and supplies takes about 2 hours a week (including filling the box, preparing the bags for next time, and cleaning around the box itself.

Thank you to all of the wonderful volunteers who bring in food and supplies each month. Your donation goes a long way toward helping those in need in our community!

~ Submitted by Carol Arrowood

TL3 Update

- **Attendees:** Gary Brockway, Phil Crouch, Diane McEntire, True Morse, Jill Rhinehart, Pam Rogalski, Will Troxell, Guests-Jim Ariail, Annette Coleman
- **Absent:** Fred Bailey, Tracey Briggs, Loring McIntyre, Rocky Redd
- **True welcomed guests Annette Coleman and Jim Ariail to present the audit** of the 2024 fiscal/calendar year. Ed Saxman, Annette's partner doing the audit, was not able to attend.
- **True welcomed Phil Crouch** as a new member of TL3, taking Laura Jones spot as the Lay Delegate to the Annual Conference.
- **Sharing personal recent experiences with feeling the Spirit at work.** The group shared personal stories about how they have recently seen the Spirit of God at work in their lives, the lives of others, at Groce, or any other place.
- **Financial**
 1. **2024 Audit.** Annette reviewed the results of the audit. Annette stressed that she and Ed were very impressed with everything they learned in doing this. The only finding was that while Groce has financial procedures it does not have a financial policy approved by the Groce Finance Committee as required by the audit Internal Control Checklist and the Book of Discipline. Since the review of the draft audit on 2/19, Gary has drafted the financial policy which will be presented for approval by the Finance Committee at the March TL3 meeting.
 2. **Final summary level 2024 end-of-year Operations budget status & summary level 2025 Operations budget review.** Gary reviewed these items with the group and others made observations.
- **Shaping Our Future Elements.** True kicked off a discussion and update of what has occurred since the Shaping Our Future Elements were presented at the 1/26 Church Family meeting.
- **Next meetings**
 1. March – Tuesday, 3/18, 6pm
 2. April – Tuesday, 4/15, 6pm, True is out of town so will need someone else to the lead the meeting
 3. May 4 – Church Family meeting after the worship service
 4. May - Tuesday, 5/13, 6pm



GROCE UNITED METHODIST CHURCH

Ash Wednesday Community Service

Wednesday, March 5, at 5:30pm

Featured Churches:

Circle of Mercy
St. John's Episcopal
Groce United Methodist
Land of the Sky UCC

United Methodist
Haw Creek Commons
Black Mountain School of
Theology

GROCEUMC.ORG

828.298.7647

Chuck Hunner Presents

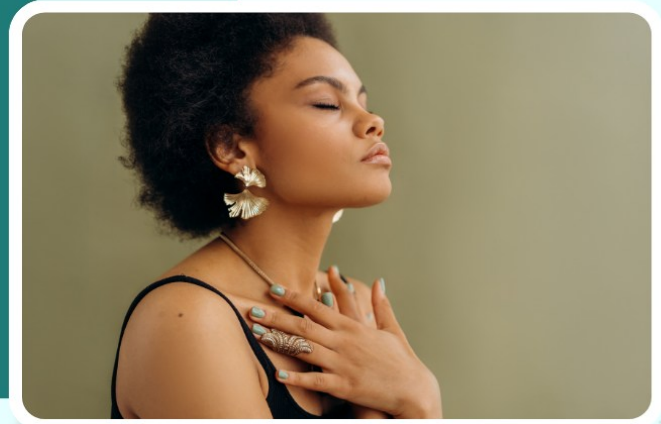
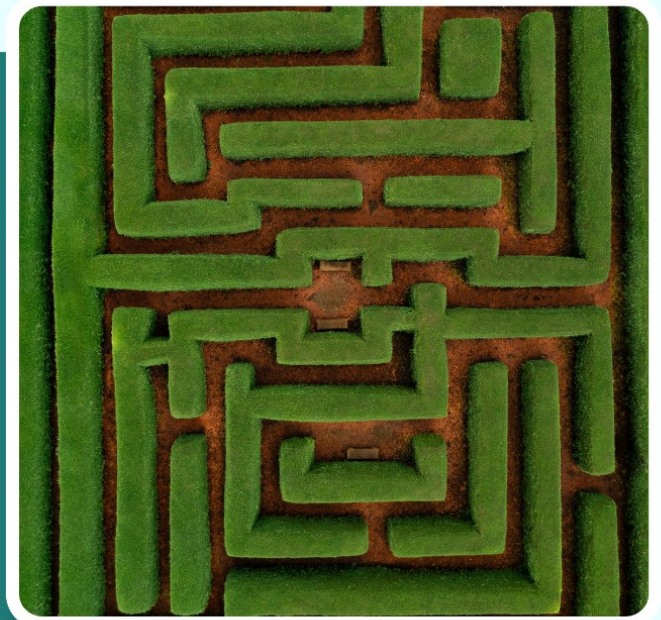
MEDITATION LABYRINTH WALKS

It's time to refresh your mind, body and soul!

DATES AND TIMES

- March 5 - 11:30am & 6:30pm
- March 17 - 11:30am & 7pm
- March 24 - 7pm
- April 2 - 11:30am
- April 11 - 7pm
- April 18 - 1:30pm & 7pm

Join Chuck Hunner on a journey of self reflection and meditation in our Asbury Hall. Each walk can either be self guided or under Chuck's tutelage. Admission is free and open to people of all ages.



www.groceumc.org

828.298.7647



Spring
CONCERT SERIES

Sunday, March 9 ~ Biltmore Brass
Sunday, April 6 ~ 4-hand Piano
Sunday, May ~ Brass & Organ

All Concerts begin at 3pm
Free | Donations Welcome
954 Tunnel Rd, Asheville

(828)298-7647 | www.groceumc.org



**\$5
PINT**

**\$10
QUART**

Annual **FROZEN SOUP SALE**

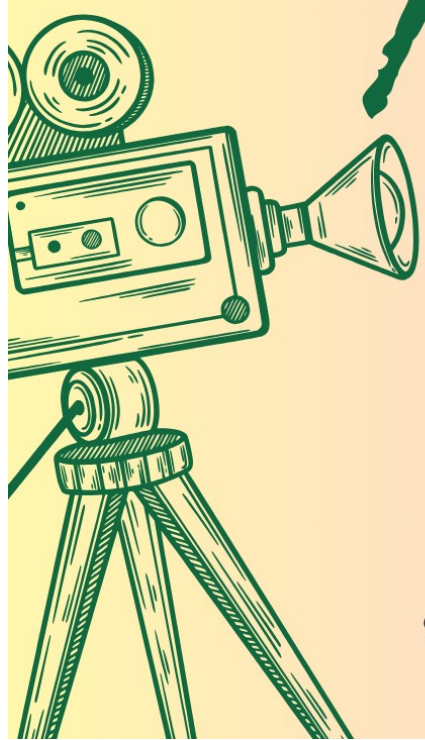
SUNDAY, MARCH 16
SALE BEGINS AT 11:30AM
IN ASBURY LOBBY

JOIN US!

www.groceumc.org



a kicked Movie Night!



FRIDAY, MARCH 21

6:30PM

954 Tunnel Rd. Asheville, NC, 28805



The Prom Dress & Exchange

Free prom dresses and men's suits

(free shoes, handbags and jewelry too)
(women's suits and separates available,
as well as a limited number of men's tuxedos, suits, slacks,
jackets, shirts, vests, and ties)

Fri 3/28 2-6pm
Sat 3/29 10-6pm
Sunday 3/30 1-5pm

Groce UMC 954 Tunnel Rd Asheville 28805

donations accepted – volunteers welcome – sewist needed
https://www.signupgenius.com/go/10C0844ACAB2DA0F85-55160057-theprom# /
contact elliotttdesigns@msn.com

www.facebook.com/thepromdressexchange/

Birthdays & Anniversaries

03/01 Rachel Burgin
03/03 Jane Williams
03/04 Tom Kuhn
03/06 Win Williamson
03/10 Debbie Bailey
03/11 Brooke Huntley
Addie Morris
03/12 Brandee Morris
03/17 Sandra Crouch
03/19 Carolyn Barber

03/20 Phyllis Glenn
03/22 Madeline Shatley
03/24 Bill Ross
03/28 Leo Rhein
Jenn Shatley
03/29 Linda Geer
03/30 Sharon Gibbs
03/31 Jean Bailey
Patrick Guilfoyle
Doug Jones

03/25 Pat & Jerry Kirschner (3)
03/26 Loran & Sandra Justus (59)





Take time each day to pray for members of your church family.



Day Light Saving Time Starts - Reminder to set your clocks forward one hour!

Sunday	Monday	Tuesday	Wednesday	Thursday	Friday	Saturday
2 AGAPE—9am Worship—10:30am Witness—11:30am	3 Prayer Group—11am Handbells—3pm Beekkeepers—7pm	4 Parkin. Group—10am Kniters—10:30am Tai Chi—1:30pm Nurture—4pm SMBB—7pm	5 Ash Wednesday Labrynth—11:30a Service—5:30pm Choir—6pm AA Meeting—6pm Labrynth—6:30pm	6 IsaacGroup—10:30a Tai Chi—1:30pm WelcomeTable—5pm UMMen—6:30pm	7 World Day of Prayer When Women Come to Pray	1 _____
9 AGAPE—9am Worship—10:30am Spring Concert—3pm Youth—5pm	10 Prayer Group—11am Handbells—3pm Guitar League—6pm Brownies—6pm	11 Kniters—10:30am Tai Chi—1:30pm SMBB—7pm Bev. Hills—7pm	12 UMM@VRQ—4pm Choir—6pm Pickleball—6pm AA Meeting—6pm	13 IsaacGroup—10:30a Tai Chi—1:30pm WelcomeTable—5pm	14 When Women Come to Pray	15 _____
16 AGAPE—9am Worship—10:30am Soup Sale—11:30am Youth—5pm	17 St. Patrick's Day Labrynth—11:30am Prayer Group—11am Handbells—3pm Outreach—3pm Labrynth—7pm	18 WNCC Clergy—9am Kniters—10:30am Tai Chi—1:30pm Miriam Circle—3pm Leadership—6pm SMBB—7pm	19 SarahCircle—10am Choir—6pm Pickleball—6pm AA Meeting—6pm	20 IsaacGroup—10:30a Tai Chi—1:30pm WelcomeTable—5pm	21 Movie Night—6:30p	22 Guitar League—10am
23 AGAPE—9am Worship—10:30am Youth—5pm	24 Prayer Group—11am Handbells—3pm Brownies—6pm Labrynth—7pm	25 Kniters—10:30am Tai Chi—1:30pm SMBB—7pm	26 Tableof16—11:30a BCAF—4pm Choir—6pm Pickleball—6pm AA Meeting—6pm	27 IsaacGroup—10:30a Tai Chi—1:30pm WelcomeTable—5pm	28 Prom Dress Exchange	29 
30 AGAPE—9am Worship—10:30am Youth—5pm	31 Prayer Group—11am Handbells—3pm	_____	_____	_____	_____	_____

Welcome Spring



Warrior Canine Connection-
 Mon. - Fri. from 8am to 5pm

Women's History Month - is a celebration of women's contributions to history, culture and society and has been observed annually in the month of March in the United States since 1987. Women's History Month 2025 will take place from Saturday, March 1 - Monday, March 31, 2025.

